

XSPEC Aviation LLC

XSPEC 142 Cheat Sheet



XSPEC 142 Stand Body Standard Visuals Model



XSPEC 142 Wide Body Enhanced Visuals Model

The startup of your XSPEC 142 should be a simple and quick process; taking about 5 minutes.

Please refer to official Rev.4 manual for complete information on the XSPEC 142 operation and maintenance. This is a reference start sheet; or “cheat sheet”.



(PC Mounted Button)

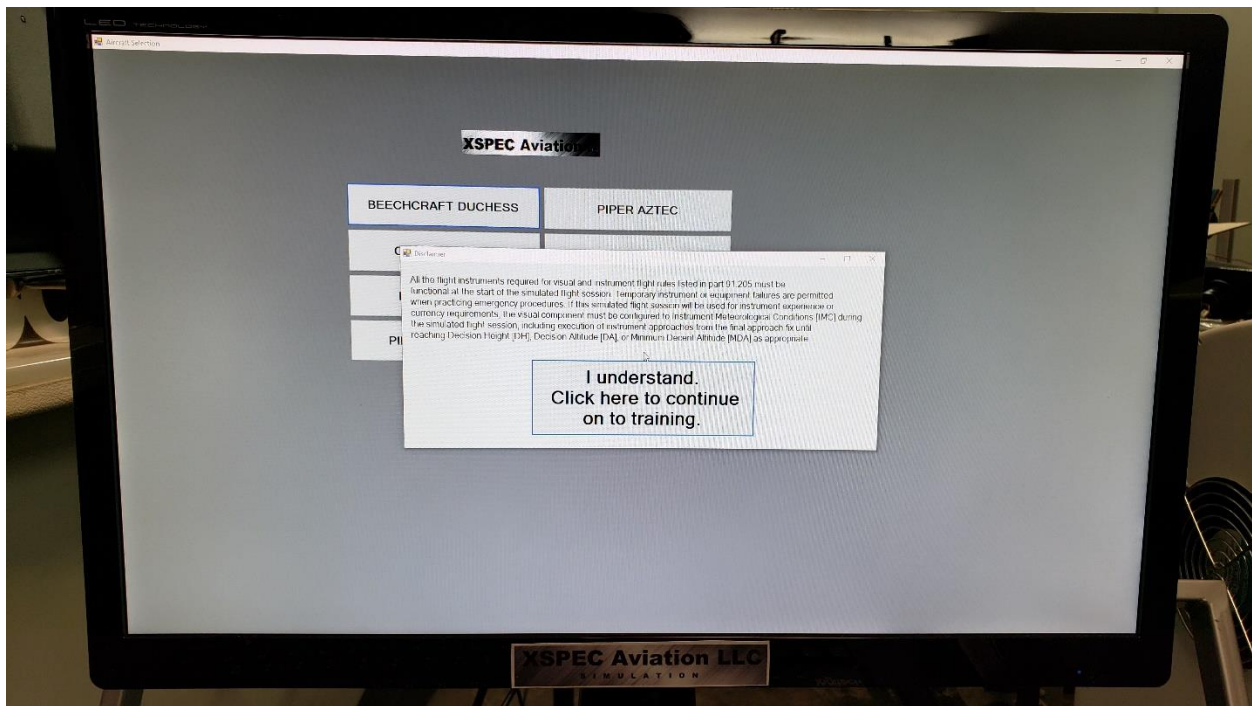


(externally mounted button)

1) Push the Power Button; it may or may not be labeled as POWER- but will appear as it does to the left.

2) Wait! The simulator will take approximately 5 minutes to start up. When you see the “I understand...” window, you may agree and

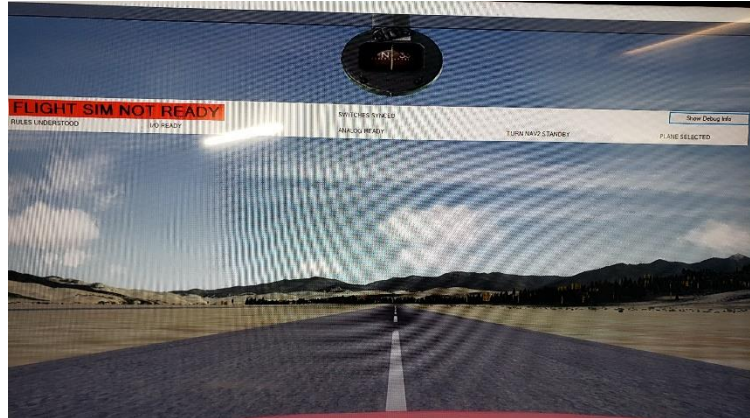
proceed to select an aircraft.



You may only run 1 aircraft per training session; to change aircraft you must shut the XSPEC 142 down; reboot and select your desired aircraft. Note that to use any single-engine aircraft configuration; the “Throttle Quadrant Clamps” MUST be installed. Do not install the Quadrant Clamps while operating a multi-engine aircraft configuration.

Do not attempt to change aircraft during the Flight.

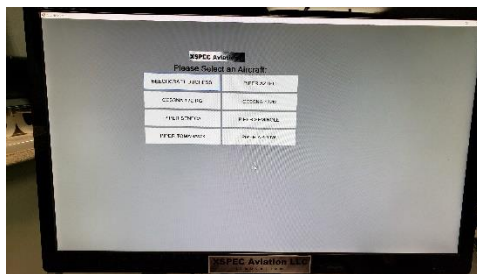
After you've selected an aircraft and agreed to the screen statement; you will be able to see the state of the XSPEC 142 at the bottom of the Instructor Station Screen. It will either say "FLIGHT SIM READY" or "FLIGHT SIM NOT READY". Note that loading an aircraft takes some time. The initial "FLIGHT SIM NOT READY" will be present on the front main visual monitor.



It is now safe and necessary to: (this is FAA required to test switch operation)

****Cycling the switches may not be necessary if the switches are put to the OFF position before POWERING ON the XSPEC 142****

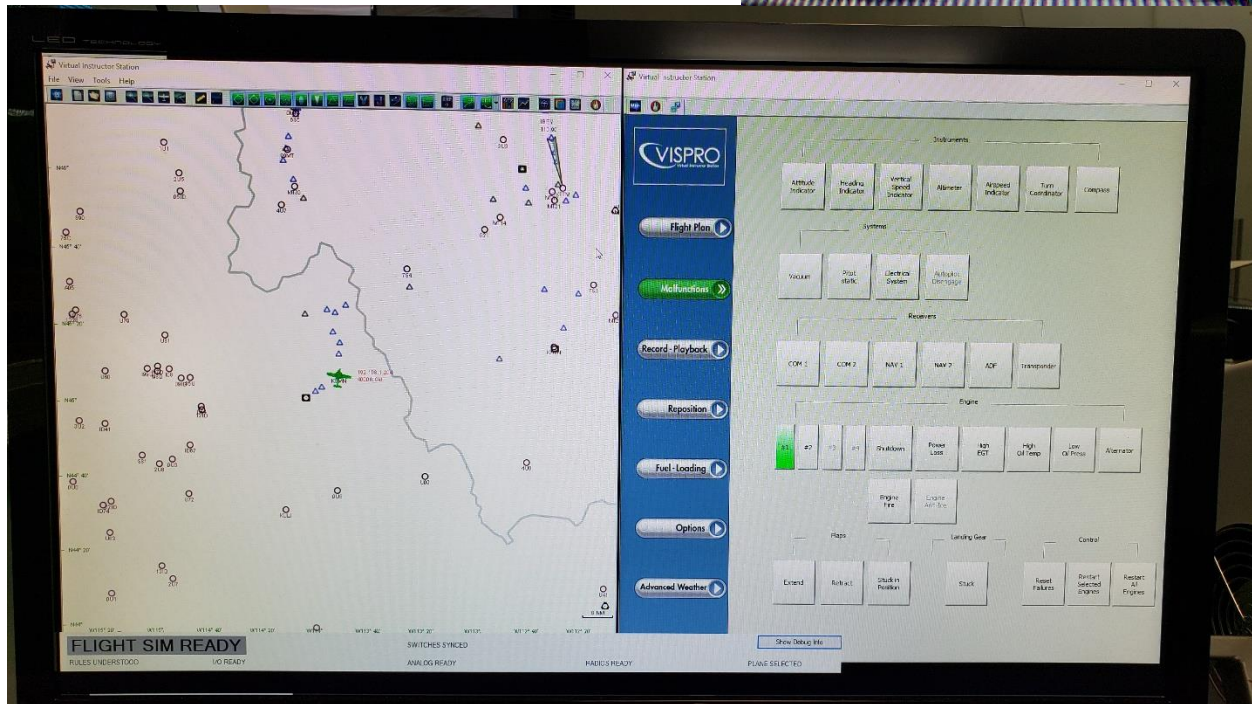
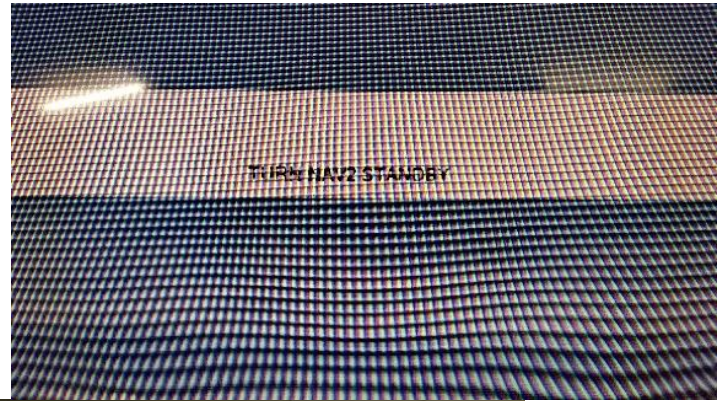
- a) Cycle Switches: (Switches Synced)
 - MASTER
 - L GEN / R GEN
 - ALL MAGNETOS
 - FUEL PUMP(S)
 - PITOT
 - ALL LIGHTS
- b) Turn HSI, ILS or ADF knob (HDG, CRS, ILS, ADF, DG SET, ALT BARO)
- c) Select an Aircraft
 You may select an aircraft via the pop-up window that appears on the Operator Station. It will be visible after startup; in the upper right-hand corner of the Instructor Operator Station. It will flash text saying "SELECT AIRCRAFT".



You will need to turn the NAV2 outer set knob to clear the Radios Not Ready test. This verifies that the radios are communicating with PREPAR3D and ready to real world training.

Below is the indication to test the radio for communication by turning the NAV2 outer knob.

If everything is working properly and an airplane is selected; the Instructor Station will say “FLIGHT SIM READY” along the bottom of the Instructor Station; along with other information; as seen below.



This is the screen you want to see before beginning operation; and treating the device like a real aircraft.

Also, your radio stack should look like the picture to the right; and not have illegible information displayed. If this happens please perform a soft restart. If the problem persists there may be a problem with the TRC RSCLink Radio Board, or one of its supporting components. This board requires a “restart relay” to ensure connectivity and has one pre-installed. Note that you must turn the GPS manually via pushing in the VOL/PWR button.

If there is a problem with the Simulator, the instructor station as well as the visuals will say “FLIGHT SIM NOT READY”. In this case please contact XSPEC Aviation LLC as soon as possible. DO NOT ATTEMPT TO DO ANY TRAINING WHILE THE SIMULATOR IS NOT READY.

You may only begin training if all procedures and startup requirements are met.

You may only train while the Instructor Station says “FLIGHT SIM READY”



****Before using Instructor Station****

Before using the XSPEC 142 Instructor Station; the operator should have already selected an aircraft and see the appropriate windows for VISPRO (see fig V1.a)

The XSPEC 142 utilizes Flight1's VISPRO "Virtual Instructor Station". You can view Flight1's Website Page about VISPRO here: (click to be re-directed to webpage)

<http://www.flight1tech.com/Products/InstructorStationSoftware/VISPROVirtualInstructorStation.aspx>

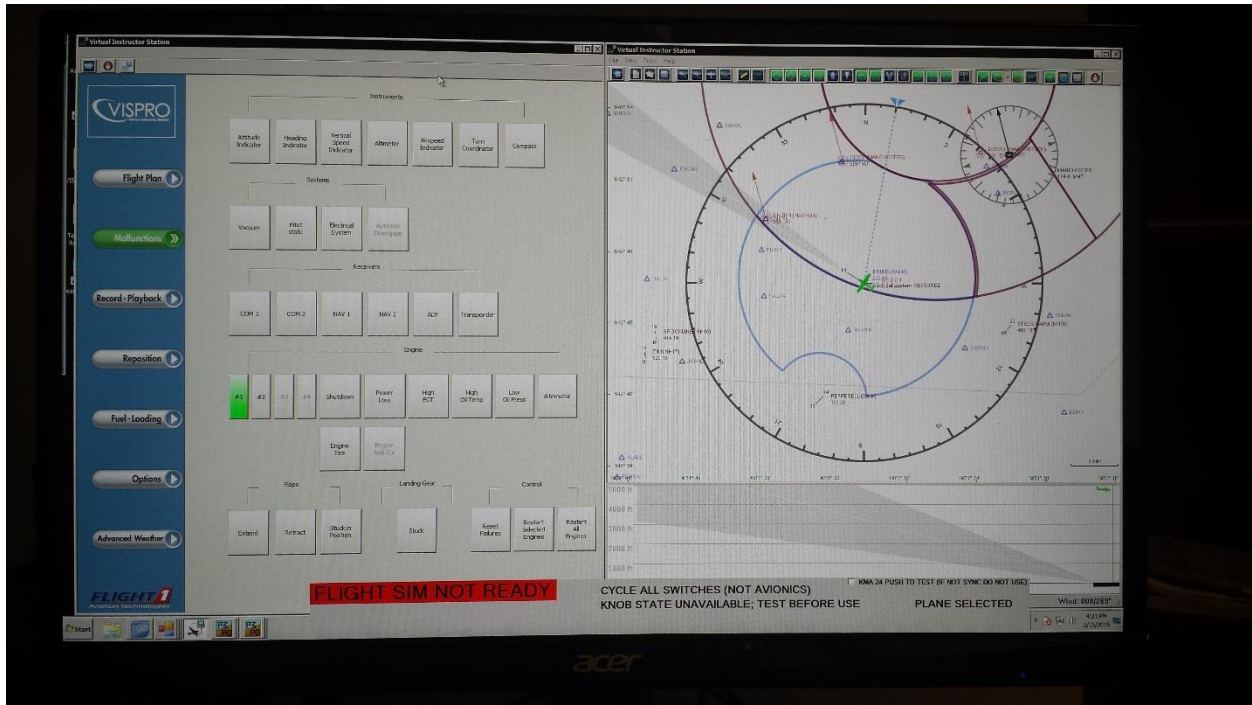
An operation manual for VISPRO is provided alongside the XSPEC 142's Operation Manual.

About the Instructor Station Operation & Software (VISPRO)

To operate the XSPEC 142 Instructor station, it is necessary to use the included mouse that comes with it. The mouse will be located in front of the Instructor station monitor.

It may be necessary to click "Connect.." for VISPRO to connect to Prepar3D; if this issue arises contact Mr. Aaron Hill at 479-418-2184. This is a normal occurrence in IP Address technology.

The XSPEC 142 Instructor station has a full featured FAILURES section. Flight1's VISPRO has a comprehensive, complete failures system. Please refer to the included Instructions for VISPRO for more information on the failures system. Below is a picture of VISPRO operating in a common way, showing off the failures and moving map chart display.



Please refer to the complete XSPEC 142 Operations Manual (Rev.4) for more information.